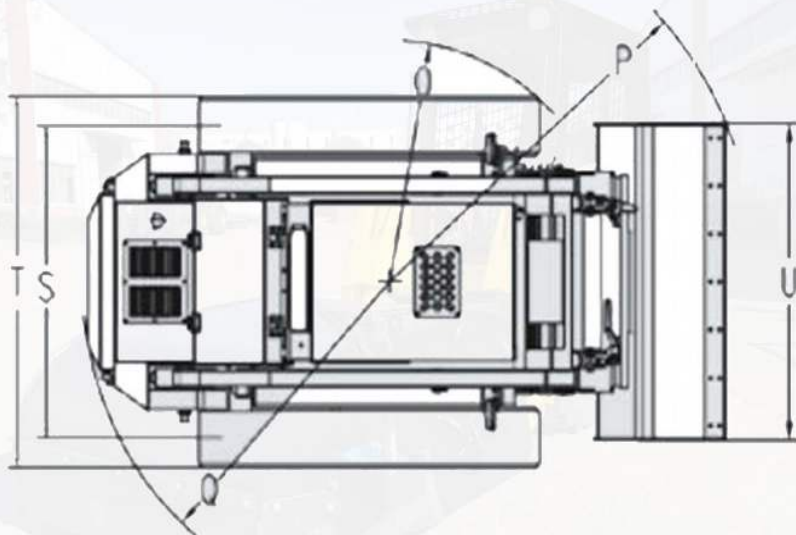




## HIXEN | HN15W SKID STEER LOADER



## HIXEN | TECHNICAL DATA

Model	HN15W	Overall operating height (mm)	2460
Engine Power (hp)	14	Height to top of cab (mm)	1320
Speed-standard (km/h)	6	Height to bottom of level bucket (mm)	1860
Tubeless tires	500-8	Overall length without bucket (mm)	1730
Solid tires optional	500-8	Overall length with bucket (mm)	2200
Rated loading capacity (kg)	280	Dumping height (mm)	2336
Total cycle time (S)	8.9	Width between outside of two wheels (mm)	800
Bucket capacity (m³)	0.15	Bucket width (mm)	860
Fuel tank (L)	25		
Wight with bucket (kg)	620		



### Have a wide range of adaptability.

Working environment: meet the needs of small projects and frequent reverse operations, and meet the needs of any narrow passage, indoor and ground transportation operations.



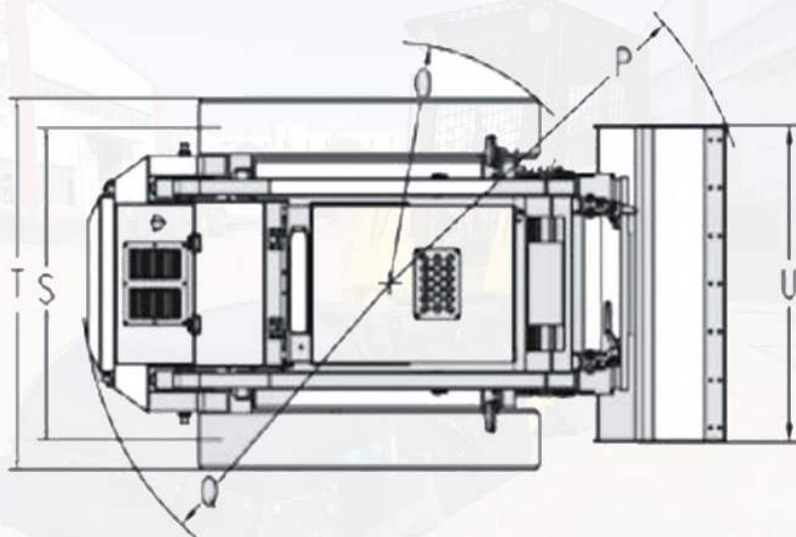
### Have diverse configurations.

crawler type, tire type and more than 100 kinds of auxiliary equipment are optional, which truly achieves low cost and multi-purpose.





## HIXEN | HN15 SKID STEER LOADER



## HIXEN | TECHNICAL DATA

Engine Power (hp)	13
Speed-standard (km/h)	6
Crawler Size	150*72
Lifting type	Radial lift
Total cycle time (S)	8.9
Bucket capacity (m³)	0.15
System pressure (bar)	170
Hydraulic pump output flow (L/min)	38
Starting battery	12V
Fuel tank (L)	25

Wight with bucket (kg)	600
Overall operating height(mm)	2460
Height to top of cab(mm)	1320
Height to bottom of level bucket (mm)	1860
Overall length without bucket(mm)	1800
Overall length with bucket (mm)	2160
Dumping height (mm)	1510
Width between outside of two wheels(mm)	900
Bucket width(mm)	940
Rated loading capacity (kg)	280



### Have a wide range of adaptability.

Working environment: meet the needs of small projects and frequent reverse operations, and meet the needs of any narrow passage, indoor and ground transportation operations.



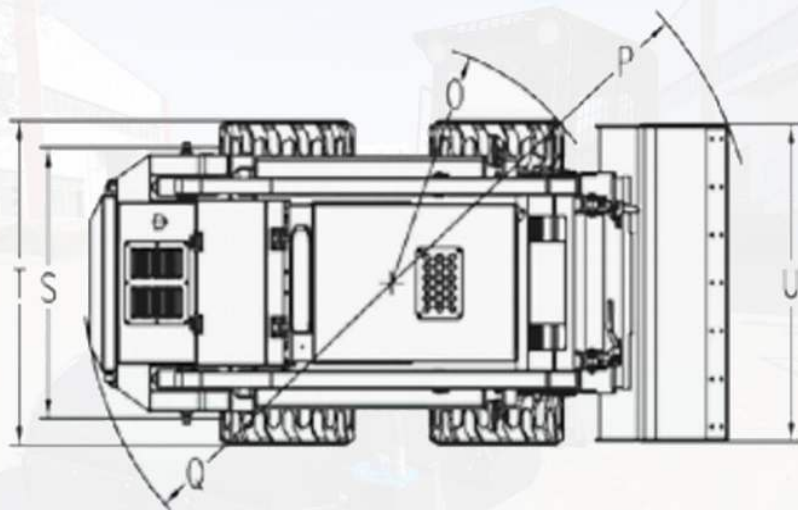
### Have diverse configurations.

crawler type, tire type and more than 100 kinds of auxiliary equipment are optional, which truly achieves low cost and multi-purpose.





## HIXEN | HN20W SKID STEER LOADER



## HIXEN | TECHNICAL DATA

Model	HN20W	Overall operating height (mm)	2510
Engine Power (hp)	20	Height to top of cab (mm)	1320
Speed-standard (km/h)	6.7	Height to bottom of level bucket (mm)	1800
Tubeless tires	18*8.50-8	Overall length without bucket (mm)	1820
Solid tires optional	500-8	Overall length with bucket (mm)	2200
Rated loading capacity (kg)	380	Dumping height (mm)	1520
Total cycle time (S)	9.0	Width between outside of two wheels (mm)	1080
Bucket capacity (m³)	0.15	Bucket width (mm)	1100
Fuel tank (L)	30		
Wight with bucket (kg)	690		



### Have a wide range of adaptability.

Working environment: meet the needs of small projects and frequent reverse operations, and meet the needs of any narrow passage, indoor and ground transportation operations.



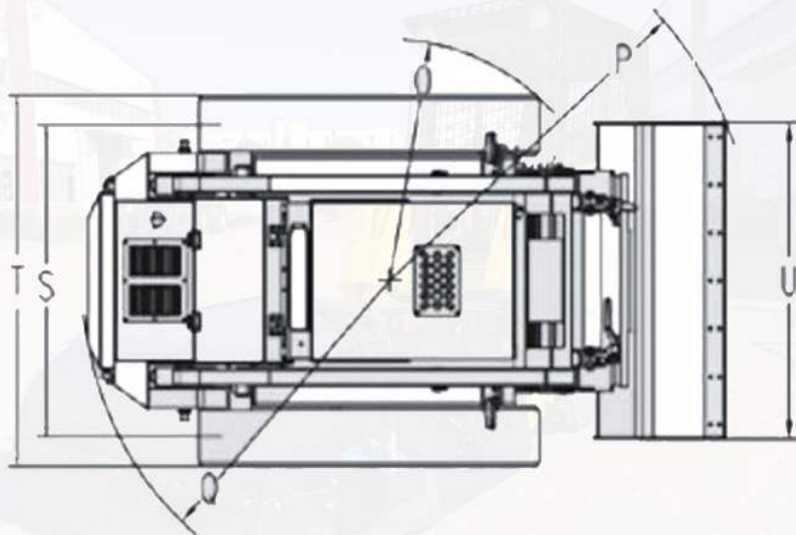
### Have diverse configurations.

crawler type, tire type and more than 100 kinds of auxiliary equipment are optional, which truly achieves low cost and multi-purpose.





## HIXEN | HN20 SKID STEER LOADER



## HIXEN | TECHNICAL DATA

Engine Power (hp)	20	Wight with bucket (kg)	690
Speed-standard (km/h)	6.7	Overall operating height(mm)	2510
Crawler Size	180*72	Height to top of cab(mm)	1320
Lifting type	Radial lift	Height to bottom of level bucket (mm)	1800
Total cycle time (S)	9.1	Overall length without bucket(mm)	1820
Bucket capacity (m)	0.15	Overall length with bucket (mm)	2200
System pressure (bar)	170	Dumping height (mm)	1520
Hydraulic pump output flow (L/min)	38	Width between outside of two wheels(mm)	960
Starting battery	12V	Bucket width(mm)	1000
Fuel tank (L)	30	Rated loading capacity (kg)	380



### Have a wide range of adaptability.

Working environment: meet the needs of small projects and frequent reverse operations, and meet the needs of any narrow passage, indoor and ground transportation operations.



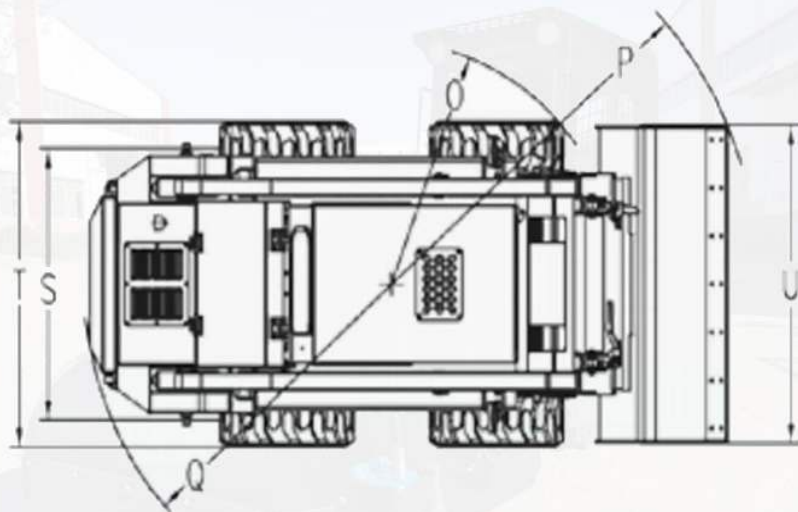
### Have diverse configurations.

crawler type, tire type and more than 100 kinds of auxiliary equipment are optional, which truly achieves low cost and multi-purpose.





## HIXEN | HN30W SKID STEER LOADER



## HIXEN | TECHNICAL DATA

Model	HN30W
Engine Power (hp)	24
Speed-standard (km/h)	6
Tubeless tires	18*8.50-8
Solid tires optional	500-8
Rated loading capacity (kg)	380
Total cycle time (S)	9.1
Bucket capacity (m³)	0.15
Fuel tank (L)	30
Wight with bucket (kg)	670

Overall operating height (mm)	2450
Height to top of cab (mm)	1280
Height to bottom of level bucket (mm)	1780
Overall length without bucket (mm)	1820
Overall length with bucket (mm)	2200
Dumping height (mm)	1520
Width between outside of two wheels (mm)	800
Bucket width (mm)	860



### Have a wide range of adaptability.

Working environment: meet the needs of small projects and frequent reverse operations, and meet the needs of any narrow passage, indoor and ground transportation operations.



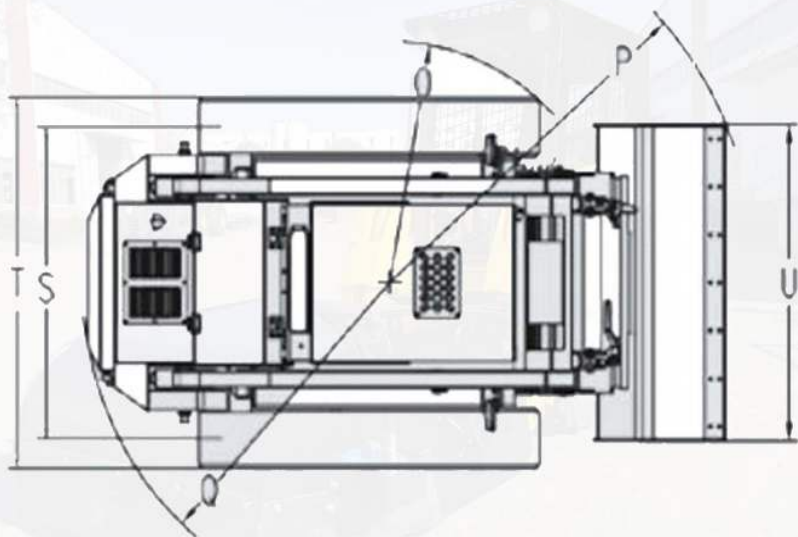
### Have diverse configurations.

crawler type, tire type and more than 100 kinds of auxiliary equipment are optional, which truly achieves low cost and multi-purpose.





## HIXEN | HN30 SKID STEER LOADER



## HIXEN | TECHNICAL DATA

Engine Power (hp)	24	Wight with bucket (kg)	670
Speed-standard (km/h)	6	Overall operating height(mm)	2450
Crawler Size	180*72	Height to top of cab(mm)	1350
Lifting type	Radial lift	Height to bottom of level bucket (mm)	1800
Total cycle time (S)	9.2	Overall length without bucket(mm)	1820
Bucket capacity (m)	0.15	Overall length with bucket (mm)	2200
System pressure (bar)	170	Dumping height (mm)	1520
Hydraulic pump output flow (L/min)	38	Width between outside of two wheels(mm)	960
Starting battery	12V	Bucket width(mm)	1000
Fuel tank (L)	30	Rated loading capacity (kg)	380



### Have a wide range of adaptability.

Working environment: meet the needs of small projects and frequent reverse operations, and meet the needs of any narrow passage, indoor and ground transportation operations.



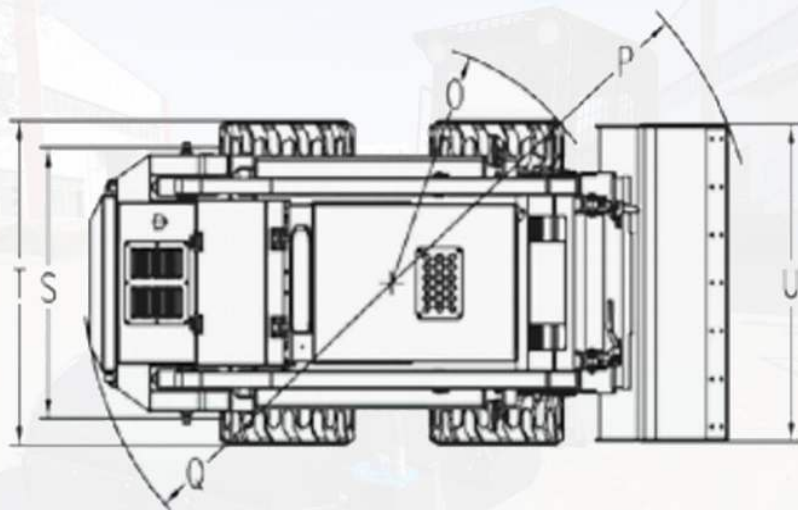
### Have diverse configurations.

crawler type, tire type and more than 100 kinds of auxiliary equipment are optional, which truly achieves low cost and multi-purpose.





## HIXEN | HN35W SKID STEER LOADER



## HIXEN | TECHNICAL DATA

Model	HN35W	Overall operating height (mm)	2510
Engine Power (hp)	24	Height to top of cab (mm)	1320
Speed-standard (km/h)	6	Height to bottom of level bucket (mm)	1800
Tubeless tires	18*8.50-8	Overall length without bucket (mm)	1820
Solid tires optional	500-8	Overall length with bucket (mm)	2200
Rated loading capacity (kg)	380	Dumping height (mm)	1520
Total cycle time (S)	9.1	Width between outside of two wheels (mm)	1080
Bucket capacity (m³)	0.15	Bucket width (mm)	1100
Fuel tank (L)	30		
Wight with bucket (kg)	670		



### Have a wide range of adaptability.

Working environment: meet the needs of small projects and frequent reverse operations, and meet the needs of any narrow passage, indoor and ground transportation operations.



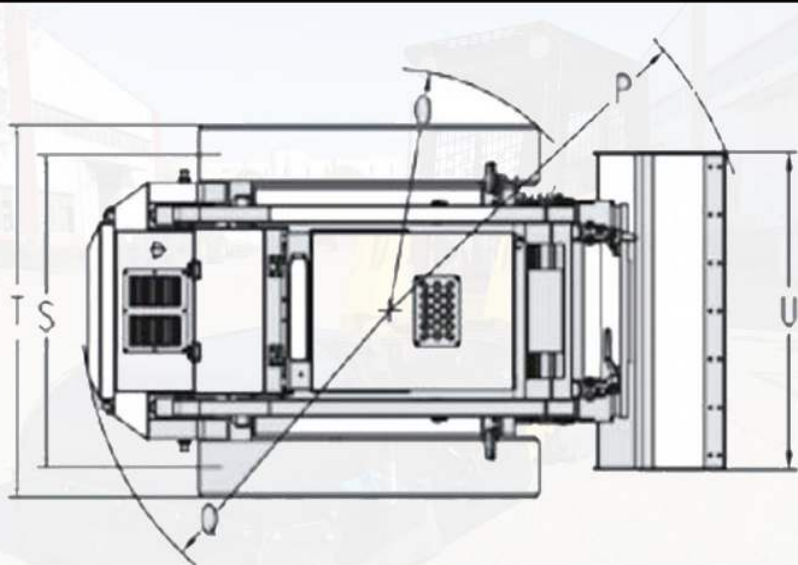
### Have diverse configurations.

crawler type, tire type and more than 100 kinds of auxiliary equipment are optional, which truly achieves low cost and multi-purpose.





## HIXEN | HN35 SKID STEER LOADER



## HIXEN | TECHNICAL DATA

Engine Power (hp)	24
Speed-standard (km/h)	6
Crawler Size	180*72
Lifting type	Radial lift
Total cycle time (S)	9.2
Bucket capacity (m)	0.15
System pressure (bar)	170
Hydraulic pump output flow (L/min)	38
Starting battery	12V
Fuel tank (L)	30

Wight with bucket (kg)	670
Overall operating height(mm)	2510
Height to top of cab(mm)	1350
Height to bottom of level bucket (mm)	1800
Overall length without bucket(mm)	1820
Overall length with bucket (mm)	2200
Dumping height (mm)	1520
Width between outside of two wheels(mm)	960
Bucket width(mm)	1000
Rated loading capacity (kg)	380



### Have a wide range of adaptability.

Working environment: meet the needs of small projects and frequent reverse operations, and meet the needs of any narrow passage, indoor and ground transportation operations.



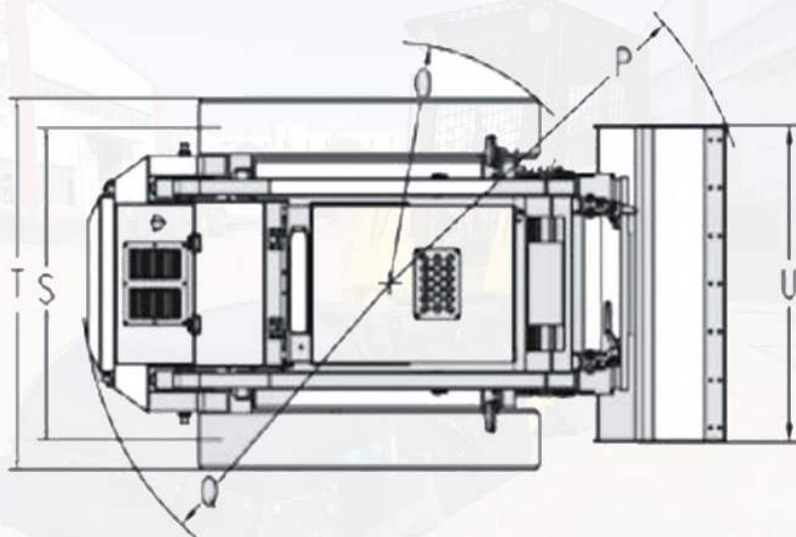
### Have diverse configurations.

crawler type, tire type and more than 100 kinds of auxiliary equipment are optional, which truly achieves low cost and multi-purpose.





## HIXEN | HN60 SKID STEER LOADER



## HIXEN | TECHNICAL DATA

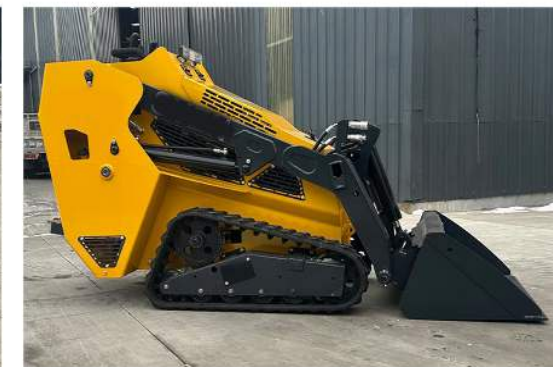
Operating height, max.	2649mm
Height to bucket hinge pin	1978mm
To the top height of the operating lever	1500mm
Height to bottom of level bucket	1800mm
Overall length without bucket	1910mm
Overall length with bucket	2480mm
Dumping angle at eight, max.	46 °
Dumping height	1382mm
Dumping distance	552mm
Flipping angle of bucket on ground	27°

Bucket flipping angle, max.	90 °
Wheel base	1087mm
Ground clearance	200mm
Angle of departure	26°
Turning radius front without bucket	1070mm
Front turning radius with bucket	1384mm
Rear turning radius	1180mm
Treadwidth, center line to center line	710mm
Width between outside of two wheels	897mm
Bucket width	906mm



### Have a wide range of adaptability.

Working environment: meet the needs of small projects and frequent reverse operations, and meet the needs of any narrow passage, indoor and ground transportation operations.



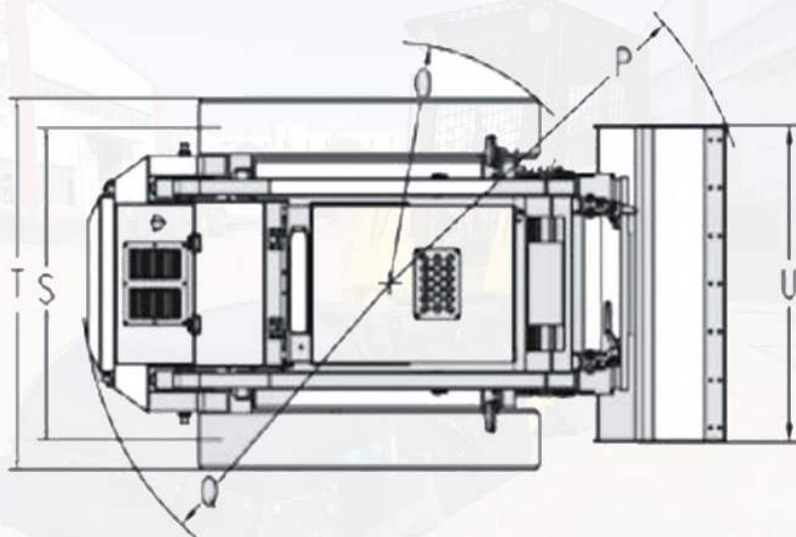
### Have diverse configurations.

crawler type, tire type and more than 100 kinds of auxiliary equipment are optional, which truly achieves low cost and multi-purpose.





## HIXEN | HN70 SKID STEER LOADER



## HIXEN | TECHNICAL DATA

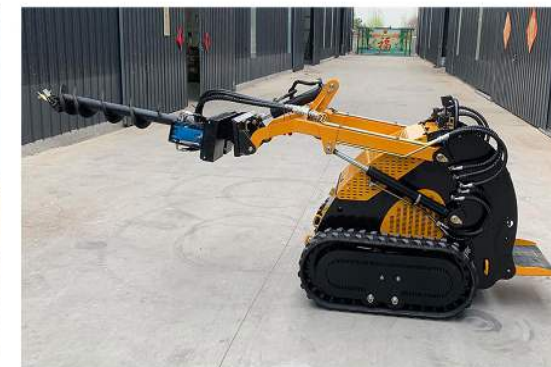
Engine Power (hp)	23
Speed-standard (km/h)	6.7
Crawler Size	180*72
Lifting type	Radial lift
Total cycle time (S)	9.2
Bucket capacity (m³)	0.15
System pressure (bar)	170
Hydraulic pump output flow (L/min)	38
Starting battery	12V
Fuel tank (L)	30

Wight with bucket (kg)	700
Overall operating height(mm)	2450
Height to top of cab(mm)	1350
Height to bottom of level bucket (mm)	1800
Overall length without bucket(mm)	1820
Overall length with bucket (mm)	2206
Dumping height (mm)	1510
Width between outside of two wheels(mm)	720
Bucket width(mm)	860
Rated loading capacity (kg)	380



### Have a wide range of adaptability.

Working environment: meet the needs of small projects and frequent reverse operations, and meet the needs of any narrow passage, indoor and ground transportation operations.



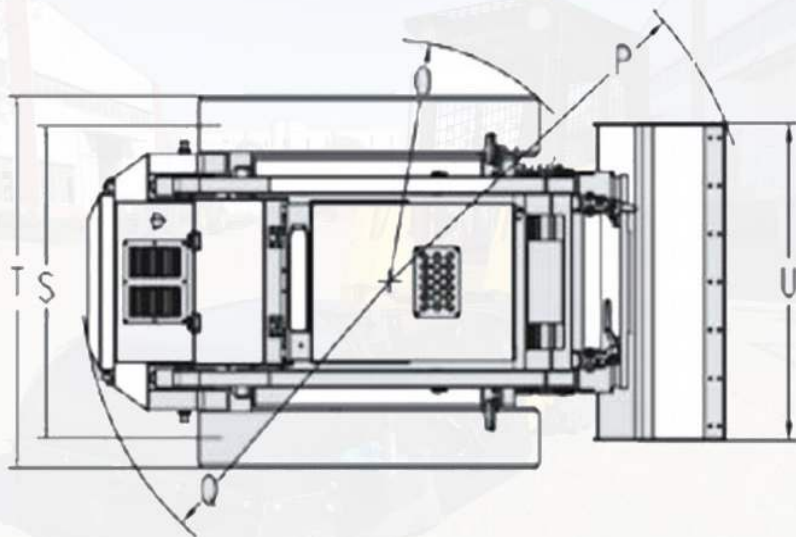
### Have diverse configurations.

crawler type, tire type and more than 100 kinds of auxiliary equipment are optional, which truly achieves low cost and multi-purpose.





## HIXEN | HN80 SKID STEER LOADER



## HIXEN | TECHNICAL DATA

Tipping load(kg)	1115
Rated load (35% of rated load)(kg)	385
Operating mass(kg)	1250
ENGINE	Kubota
Rated power (kw)	18.5
Rated speed (rpm)	3600
Rated torque (N.m)	56.1 / 2600
Displacement (L)	EPA
Fuel/Cooling	Diesel/Water-cooled
Number of cylinders	3

Fuel tank capacity (L)	35
Traveling Speed (km/h)	5.3
Travel speed (reverse km/h)	5.3
Rated system flow (L/min)	41 L/min (68.4 Travel)
Rated pressure (Mpa)	20Mpa
Hydraulic oil tank volume (L)	35
Unloading distance (at maximum height)(mm)	582
Unloading height (mm)	1503
Overall length (with bucket)(mm)	2698
Overall width (bucket)(mm)	976



### Have a wide range of adaptability.

Working environment: meet the needs of small projects and frequent reverse operations, and meet the needs of any narrow passage, indoor and ground transportation operations.



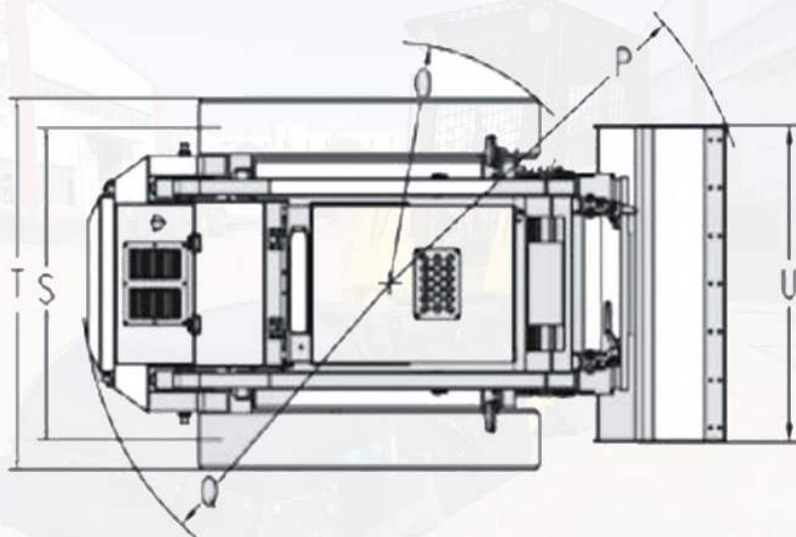
### Have diverse configurations.

crawler type, tire type and more than 100 kinds of auxiliary equipment are optional, which truly achieves low cost and multi-purpose.





## HIXEN | HN85 SKID STEER LOADER



## HIXEN | TECHNICAL DATA

Engine model	Perkins engine diesel	Mini ground clearance	94mm
No. of cylinders	3 cylinder	Angle of departure	23°
Net Power	18.4kw	Rated loading capacity	400kgs
Operating height	2695mm	Machine weight	1330kgs
Height to bucket hinge pin	2000mm	working system pressure	250 bar
Height to top	1496mm	working system Flow rate	62.4 L/min
Overall length with GP bucket	2694mm	Driving System pressure	250 bar
Overall length without bucket	2067mm	Driving system Flow rate	720
Wheelbase	1080mm	Pressure	18mpa
Overall width	1070mm	Fuel tank capacity	35L



### Have a wide range of adaptability.

Working environment: meet the needs of small projects and frequent reverse operations, and meet the needs of any narrow passage, indoor and ground transportation operations.



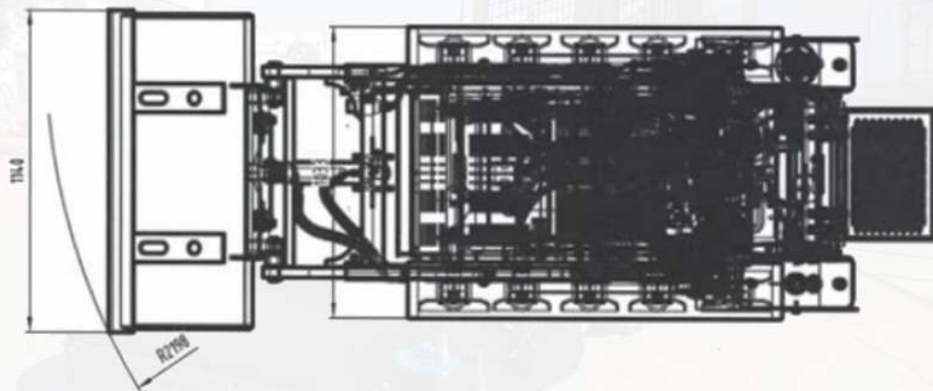
### Have diverse configurations.

crawler type, tire type and more than 100 kinds of auxiliary equipment are optional, which truly achieves low cost and multi-purpose.





## HIXEN | HN90 SKID STEER LOADER



## HIXEN | TECHNICAL DATA

Max working height	2420 mm
Max pin height	2099 mm
Max dump height	1617 mm
The highest point discharge distance	615 mm
Bucket swing angle	79°
Bucket unloading angle	36°
Opening-closing angle	43°
Angle of departure	30°
Total height	1607 mm
The height from the ground	300 mm

Wheelbase	1065 mm
No bucket length	2200 mm
Total width	1033 mm
Bucket width	1140 mm
Total length (L) (with bucket)	2752 mm
Turning radius (F)	2198 mm
Engine	KUBOTA D1105/PERKINS 403J-11
Rated power	18.5KW/25HP
Rotating speed (rpm)	3000
Noise (Db)	≤95



### Have a wide range of adaptability.

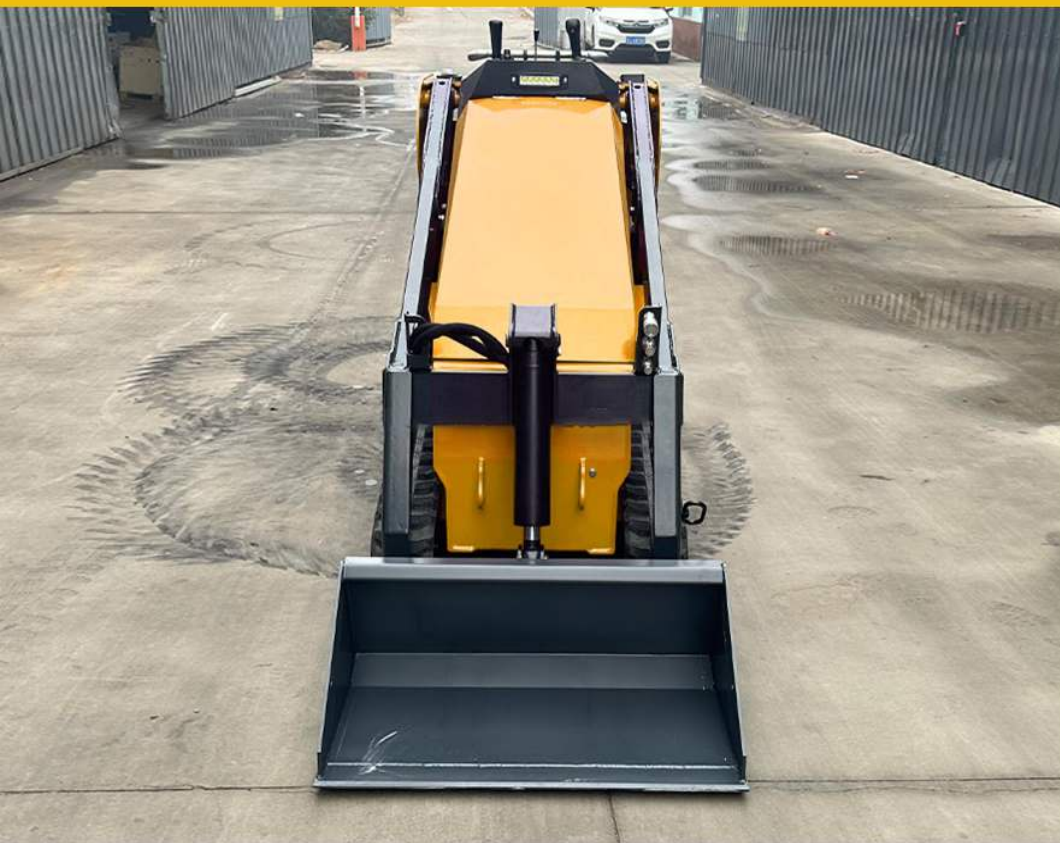
Working environment: meet the needs of small projects and frequent reverse operations, and meet the needs of any narrow passage, indoor and ground transportation operations.



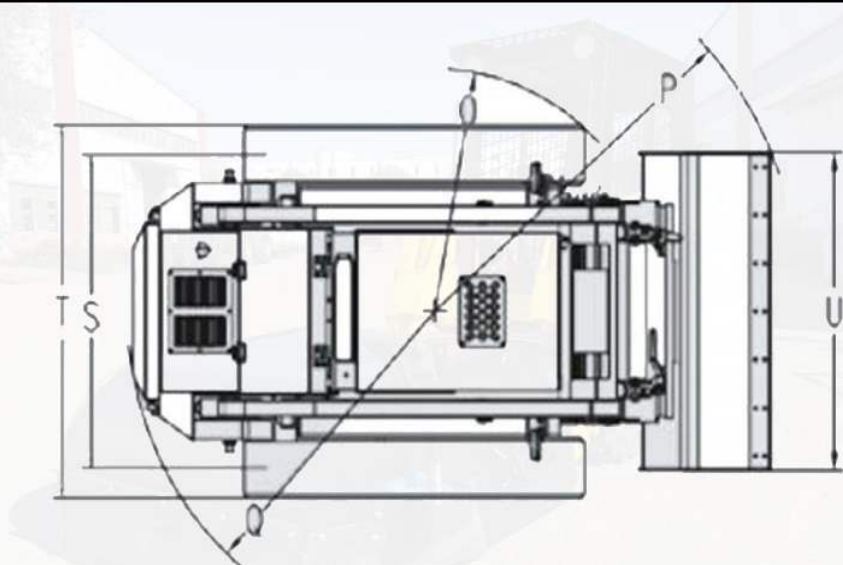
### Have diverse configurations.

crawler type, tire type and more than 100 kinds of auxiliary equipment are optional, which truly achieves low cost and multi-purpose.





## HIXEN | HN100 SKID STEER LOADER



## HIXEN | TECHNICAL DATA

Operating height, max.	2916mm
Height to bucket hinge pin	2175mm
To the top height of the operating lever	1500mm
Height to bottom of level bucket	2100mm
Overall length without bucket	2108mm
Overall length with bucket	2758mm
Dumping angle at eight, max.	46 °
Dumping height	1506mm
Dumping distance	582mm
Flipping angle of bucket on ground	27°

Bucket flipping angle, max	90°
Wheel base	1087mm
Ground clearance	200mm
Angle of departure	26°
Turning radius front without bucket	1210mm
Front turning radius with bucket	1700mm
Rear turning radius	1328mm
Treadwidth, center line to center line	736mm
Width between outside of two wheels	906mm
Bucket width	916mm



### Have a wide range of adaptability.

Working environment: meet the needs of small projects and frequent reverse operations, and meet the needs of any narrow passage, indoor and ground transportation operations.



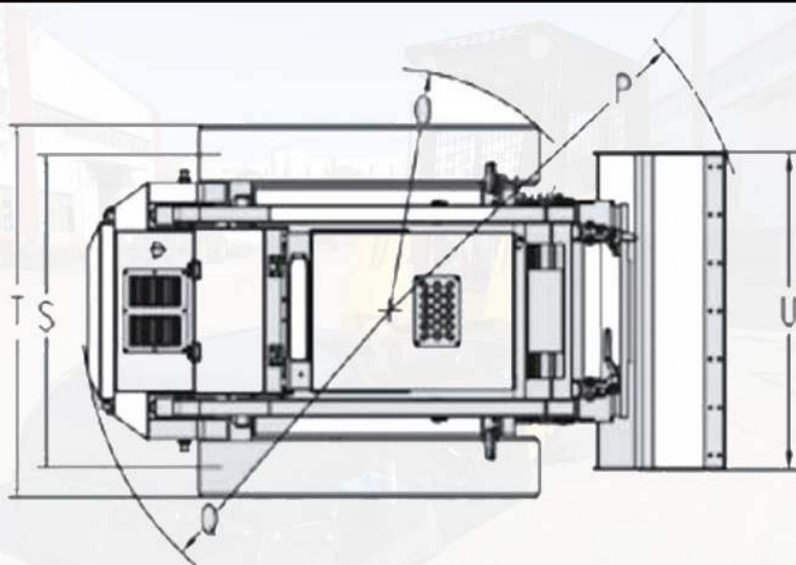
### Have diverse configurations.

crawler type, tire type and more than 100 kinds of auxiliary equipment are optional, which truly achieves low cost and multi-purpose.





## HIXEN | HN110 SKID STEER LOADER



## HIXEN | TECHNICAL DATA

Operating height, max.	2916mm
Height to bucket hinge pin	2175mm
To the top height of the operating lever	1500mm
Height to bottom of level bucket	2100mm
Overall length without bucket	2108mm
Overall length with bucket	2758mm
Dumping angle at eight, max.	46 °
Dumping height	1506mm
Dumping distance	582mm
Flipping angle of bucket on ground	27°

Bucket flipping angle, max	90°
Wheel base	1087mm
Ground clearance	200mm
Angle of departure	26°
Turning radius front without bucket	1210mm
Front turning radius with bucket	1700mm
Rear turning radius	1328mm
Treadwidth, center line to center line	736mm
Width between outside of two wheels	906mm
Bucket width	916mm



### Have a wide range of adaptability.

Working environment: meet the needs of small projects and frequent reverse operations, and meet the needs of any narrow passage, indoor and ground transportation operations.



### Have diverse configurations.

crawler type, tire type and more than 100 kinds of auxiliary equipment are optional, which truly achieves low cost and multi-purpose.